

A close-up photograph of the corner of a wooden outdoor chair. The chair is made of light-colored wood with a visible grain. The seat and backrest are upholstered in a light-colored, textured fabric. The image shows the top edge of the seat, the side of the backrest, and the corner where they meet. The lighting is soft, highlighting the natural texture of the wood and the fabric.

Outdoor  
Collection  
2024

*Ethnicraft*

We create the foundations  
of your home to inspire  
the stories of your life.

For more than 25 years, we have been creating timeless furniture and accessories manufactured from quality materials. True to our values, we have maintained our goal to produce good design, distinguished by authenticity, simplicity and quality, as well as creativity and innovation. We rely on our unique expertise to create singular designs ready to embellish your daily life durably.

We create collections for every room or space: from the furniture that defines the purpose of an area to the objects that layer it with meaning. Nothing excites us more than seeing how people love and use our products in the stories of their lives. All of our designs are intentionally timeless.

They withstand trends and associate well with different styles, and they can be passed on from one home to the next, carrying over the stories of one lifetime to another.







# Contents

## Inspiration

9 Lookbook

## Outdoor

30 Dining tables

34 Coffee & side tables

36 Seating

42 Lounge

53 Outdoor accessories

## Support

62 Swatches

64 Sustainability

66 Care & Maintenance

70 Care products





# Lookbook

Find inspiration  
in our collection





**Bok** outdoor dining table | **Bok** outdoor dining chair



**Bok** outdoor dining table | **Bok** outdoor dining chair





Mikado outdoor dining table | Bok outdoor dining chair



Jack outdoor side table | Jack outdoor lounge chair





**Jack** outdoor sofa | **Jack** outdoor coffee table | **Quatro** outdoor side table | **Donut** outdoor pouf  
**Stripes** outdoor cushion | **Boucle** outdoor cushion | **Nomad** indoor/outdoor rug



**Jack** outdoor adjustable lounge | **Nomad** outdoor cushion





Jack outdoor sofa | Jack outdoor footstool | Nomad outdoor cushion



Bok outdoor dining table | Bok outdoor chair





Jack outdoor lounge chair | Jack outdoor footstool



Bok outdoor dining table | Bok outdoor dining chair | Osso outdoor stool





**Jack** sofa | **Quatro** outdoor coffee and side table  
**Nomad** outdoor cushion | **Boucle** Light outdoor cushion | **Stripes** outdoor cushion



**Jack** outdoor adjustable lounger | **Jack** outdoor side table



Jack outdoor adjustable lounger



Donut outdoor pouf | Quatro outdoor coffee table





Jack outdoor sofa, Jack outdoor side table



Bok outdoor dining table, Bok outdoor dining chair





# Products

For more detailed  
product information,  
visit [ethnicraft.com](http://ethnicraft.com)



# Material icons

You may come across these icons within this catalogue.



## Varnished

The items marked with this icon are finished with varnish. Visit page 66 for more information on how to take care of our varnished furniture.



## Brushed

The items marked with this icon are brushed. This finishing gives our furniture more depth. The rougher surface highlights the grain of the wood.



## Natural

The items marked with this icon come without any finishing or protective treatment applied to the surface. A natural finish enhances the inherent beauty of the material but can require more maintenance. Visit page 66 for more information on how to take care of our natural wood furniture.



## Forest Stewardship Council®

The items marked with this icon carry the FSC® label. Visit page 64 for more information on the organisation that promotes responsible management of the world's forests.



The mark of responsible forestry. The mark of responsible forestry.



## Bok outdoor dining table

| length x width            | teak <sup>(N)</sup> | teak black <sup>(V) (B)</sup> |
|---------------------------|---------------------|-------------------------------|
| 80 × 80   31.5" × 31.5"   | <b>10296</b>        | <b>x</b>                      |
| 162 × 80   64" × 31.5"    | <b>10269</b>        | <b>10276</b>                  |
| 200 × 100   78.5" × 39.5" | <b>10270</b>        | <b>10277</b>                  |
| 250 × 100   98.5" × 39.5" | <b>10271</b>        | <b>10278</b>                  |
| 300 × 110   118" × 43.5"  | <b>10272</b>        | <b>10279</b>                  |

---

**table height:** 76 cm | 30"

teak



teak black



round

| length x width x height             | teak <sup>(N)</sup> |
|-------------------------------------|---------------------|
| 125 × 125 x 76 cm   49" × 49" x 30" | <b>10298</b>        |

teak



## Mikado outdoor dining table

| length x width            | teak <sup>(N)</sup> |
|---------------------------|---------------------|
| 203 × 104   80" × 41"     | <b>10273</b>        |
| 240 × 108   94.5" × 42.5" | <b>10274</b>        |

---

**table height:** 76 cm | 30"

teak





## Jack outdoor dining table

| length x width            | teak <sup>(N)</sup> |
|---------------------------|---------------------|
| 200 × 100   78.5" × 39.5" | <b>10216</b>        |
| 250 × 100   98.5" × 39.5" | <b>10217</b>        |
| 300 × 110   118" × 43.5"  | <b>10218</b>        |

---

**table height:** 76 cm | 30"

teak



## Circle outdoor dining table

| length x width            | teak <sup>(N)</sup> |
|---------------------------|---------------------|
| 136 × 136   53.5" × 53.5" | <b>10281</b>        |
| 163 × 163   64" × 64"     | <b>10280</b>        |

---

**table height:** 76 cm | 30"

teak





## Jack outdoor coffee table

| length x width x height              | teak <sup>(N)</sup> | teak black <sup>(V) (B)</sup> |
|--------------------------------------|---------------------|-------------------------------|
| 120 × 65 × 35 cm   47" × 25.5" × 14" | <b>10258</b>        | <b>10245</b>                  |
| 150 × 65 × 35 cm   59" × 25.5" × 14" | <b>10259</b>        | <b>10246</b>                  |

teak



teak black



## Quatro outdoor coffee table

| length x width x height               | teak <sup>(N)</sup> | teak black <sup>(V) (B)</sup> |
|---------------------------------------|---------------------|-------------------------------|
| 68 × 68 × 42 cm   27" × 27" × 16.5"   | <b>10264</b>        | <b>10267</b>                  |
| 95 × 95 × 35 cm   37.5" × 37.5" × 14" | <b>10265</b>        | <b>10268</b>                  |

teak



teak black



## Jack outdoor side table

| length x width x height               | teak <sup>(N)</sup> | teak black <sup>(V) (B)</sup> |
|---------------------------------------|---------------------|-------------------------------|
| 54 × 54 × 38 cm   21.5" × 21.5" × 15" | <b>10257</b>        | <b>10244</b>                  |

teak



teak black



## Quatro outdoor side table

| length x width x height           | teak <sup>(N)</sup> | teak black <sup>(V) (B)</sup> |
|-----------------------------------|---------------------|-------------------------------|
| 59 × 59 × 38 cm   23" × 23" × 15" | <b>10263</b>        | <b>10266</b>                  |

teak



teak black





# Bok outdoor dining chair

frames and cushions can be ordered separately



|                                       |   |                               |
|---------------------------------------|---|-------------------------------|
| <b>length x width x height</b>        | teak <sup>(N)</sup>                       | teak black <sup>(V) (B)</sup> |
| 50 × 54 × 76 cm   19.5" × 21.5" × 30" | <b>10155</b>                              | <b>10154</b>                  |
| <b>with fabric cushion</b>            |   |                               |
| off white                             | <b>10351</b>                              | <b>10361</b>                  |
| natural                               | <b>10353</b>                              | <b>10363</b>                  |
| mocha                                 | <b>10352</b>                              | <b>10362</b>                  |
| <b>upholstery</b>                     | 100% polypropylene fabric, quick-dry foam |                               |

teak off white natural mocha



teak black off white natural mocha



# Jack outdoor dining chair

frames and cushions can be ordered separately



|                                     |   |              |              |
|-------------------------------------|---|--------------|--------------|
| teak <sup>(N)</sup>                 | off white                                 | natural      | mocha        |
| <b>length x width x height</b>      | <b>10371</b>                              | <b>10373</b> | <b>10372</b> |
| 56 × 60 × 81 cm   22" × 23.5" × 32" |   |              |              |
| <b>upholstery</b>                   | 100% polypropylene fabric, quick-dry foam |              |              |

teak off white natural mocha





## EX1 outdoor dining chair

|                                     |                     |
|-------------------------------------|---------------------|
| <b>length x width x height</b>      | teak <sup>(N)</sup> |
| 43 × 56 × 83 cm   17" × 22" × 32.5" | <b>10285</b>        |

teak



## Osso outdoor stool

frames and cushions can be ordered separately



|                                       |                     |
|---------------------------------------|---------------------|
| <b>length x width x height</b>        | teak <sup>(N)</sup> |
| 50 × 33 × 49 cm   19.5" × 13" × 19.5" | <b>10288</b>        |

**with fabric cushion** (height + 2cm | 0.5")

|           |              |
|-----------|--------------|
| off white | <b>10356</b> |
| natural   | <b>10358</b> |
| mocha     | <b>10357</b> |

**upholstery**

100% polypropylene fabric, quick-dry foam

teak

off white

natural

mocha





# Bok outdoor bench

frames and cushions can be ordered separately



|                            | length x width x height                   | teak <sup>(N)</sup> |
|----------------------------|---|---------------------|
| <b>2 seater frame</b>      | 137 × 35 × 46 cm   54" × 14" × 18"        | <b>10205</b>        |
| <b>with fabric cushion</b> | (height + 3cm   1.5")                     |                     |
| off white                  |   | <b>10381</b>        |
| natural                    |   | <b>10383</b>        |
| mocha                      |   | <b>10382</b>        |
| <b>3 seater frame</b>      | 162 × 35 × 46 cm   64" × 14" × 18"        | <b>10206</b>        |
| <b>with fabric cushion</b> | (height + 3cm   1.5")                     |                     |
| off white                  |   | <b>10386</b>        |
| natural                    |   | <b>10388</b>        |
| mocha                      |   | <b>10387</b>        |
| <b>upholstery</b>          | 100% polypropylene fabric, quick-dry foam |                     |

teak

off white



teak

off white



teak

natural



teak

natural

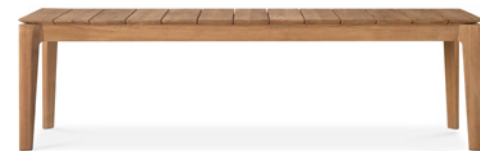


teak

2 seater

teak

3 seater



teak

mocha



teak

mocha





# Jack outdoor lounge chair | Jack outdoor footstool

frames and cushions can be ordered separately



| lounge chair: length x width x height | fabric cushion | teak (N) | teak black (V) (B) |
|---------------------------------------|----------------|----------|--------------------|
| 76 × 90 × 74 cm   30" × 35.5" × 29"   | off white      | 10250    | 10231              |
|                                       | natural        | 10240    | 10228              |
|                                       | mocha          | 10253    | 10234              |

| footstool: length x width x height  | fabric cushion | teak (N) | teak black (V) (B) |
|-------------------------------------|----------------|----------|--------------------|
| 71 × 54 × 41 cm   28" × 21.5" × 16" | off white      | 10248    | 10238              |
|                                     | natural        | 10247    | 10237              |
|                                     | mocha          | 10249    | 10239              |

| upholstery |   |
|------------|---|
|            | 100% polypropylene fabric, quick-dry foam |

teak

off white

teak

natural



teak

mocha

teak black

off white

teak black

natural

teak black

mocha





# Jack outdoor sofa

frames and cushions can be ordered separately



| length x width x height              | fabric cushion | teak <sup>(N)</sup> | teak black <sup>(V) (B)</sup> |
|--------------------------------------|----------------|---------------------|-------------------------------|
| 180 x 90 x 74 cm   71" x 35.5" x 29" | off white      | <b>10251</b>        | <b>10232</b>                  |
|                                      | natural        | <b>10241</b>        | <b>10229</b>                  |
|                                      | mocha          | <b>10254</b>        | <b>10235</b>                  |

**upholstery** 100% polypropylene fabric, quick-dry foam

teak

off white

teak

natural



teak

mocha



teak black

off white

teak black

natural



teak black

mocha





# Jack outdoor sofa

frames and cushions can be ordered separately



| length x width x height                 | fabric cushion | teak <sup>(N)</sup> | teak black <sup>(V) (B)</sup> |
|---|----------------|---------------------|-------------------------------|
| 265 x 90 x 74 cm   104.5" x 35.5" x 29" | off white      | <b>10252</b>        | <b>10233</b>                  |
|   | natural        | <b>10242</b>        | <b>10230</b>                  |
|   | mocha          | <b>10255</b>        | <b>10236</b>                  |

**upholstery** 100% polypropylene fabric, quick-dry foam

teak

off white

teak

natural



teak

mocha



teak black

off white

teak black

natural



teak black

mocha





# Jack outdoor lounge chair | Jack outdoor footstool

frames and cushions can be ordered separately



| lounge chair: length x width x height | fabric cushion | white aluminium |
|---------------------------------------|----------------|-----------------|
| 74 × 89 × 74 cm   29" × 35" × 29"     | off white      | <b>60150</b>    |
|                                       | natural        | <b>60152</b>    |
|                                       | mocha          | <b>60151</b>    |

| footstool: length x width x height  | fabric cushion | white aluminium |
|-------------------------------------|----------------|-----------------|
| 70 × 53 × 41 cm   27.5" × 21" × 16" | off white      | <b>60145</b>    |
|                                     | natural        | <b>60147</b>    |
|                                     | mocha          | <b>60146</b>    |

| upholstery | 100% polypropylene fabric, quick-dry foam |
|------------|---|
|------------|---|

white aluminium      off white      white aluminium      natural



white aluminium      mocha



# Jack outdoor sofa

frames and cushions can be ordered separately



| sofa : length x width x height     | fabric cushion | white aluminium |
|------------------------------------|----------------|-----------------|
| 178 × 89 × 74 cm   70" × 35" × 29" | off white      | <b>60155</b>    |
|                                    | natural        | <b>60157</b>    |
|                                    | mocha          | <b>60156</b>    |

| upholstery | 100% polypropylene fabric, quick-dry foam |
|------------|---|
|------------|---|

white aluminium      off white      white aluminium      natural



white aluminium      mocha



# Jack outdoor adjustable lounger

frames and cushions can be ordered separately



| length x width x height             | fabric cushion                            |                  | fabric thin cushion |                  |              |              |
|-------------------------------------|---|------------------|---------------------|------------------|--------------|--------------|
| 216 x 84 x 34 cm   85" x 33" x 13.5 | teak (N)                                  | teak black (V B) | teak (N)            | teak black (V B) |              |              |
|                                     | off white                                 | <b>10331</b>     | <b>10341</b>        | off white        | <b>10336</b> | <b>10346</b> |
|                                     | natural                                   | <b>10333</b>     | <b>10343</b>        | natural          | <b>10338</b> | <b>10348</b> |
|                                     | mocha                                     | <b>10332</b>     | <b>10342</b>        | mocha            | <b>10337</b> | <b>10347</b> |
| <b>upholstery</b>                   | 100% polypropylene fabric, quick-dry foam |                  |                     |                  |              |              |

fabric cushion



fabric thin cushion



teak



off white

teak



natural

teak



mocha

teak black



off white

teak black



natural

teak black



mocha



## Donut outdoor pouf

| length x width x height                 | natural check                                | marsala check | mocha check  |
|---|--|---------------|--------------|
| 50 × 50 × 40 cm   19.5" × 19.5" × 15.5" | <b>20069</b>                                 | <b>20068</b>  | <b>20067</b> |
| <b>upholstery</b>                       | 100% polypropylene fabric and quick-dry foam |               |              |

fabric upholstery natural check



fabric upholstery marsala check



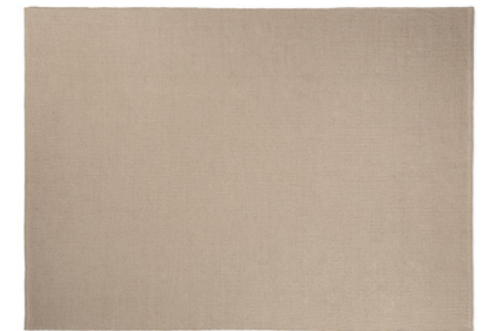
fabric upholstery mocha check



## Nomad indoor/outdoor rug

| length x width             | oat                              |
|----------------------------|----------------------------------|
| 170 x 240 cm   5'6" x 7'9" | <b>21204</b>                     |
| 200 x 300 cm   6'5" x 9'8" | <b>21205</b>                     |
| <b>textile</b>             | 100% handwoven recycled PET yarn |

oat



## Boucle Light outdoor cushion

| length x width x height              | white                              |
|--------------------------------------|------------------------------------|
| 50 x 50 x 15 cm   19.5" x 19.5" x 6" | <b>21103</b>                       |
| 60 x 40 x 15 cm   23.5" x 15.5" x 6" | <b>21104</b>                       |
| <b>textile</b>                       | 100% polypropylene, quick-dry foam |

## Boucle outdoor cushion

| length x width x height              | oat                                |
|--------------------------------------|------------------------------------|
| 50 x 50 x 15 cm   19.5" x 19.5" x 6" | <b>21105</b>                       |
| 60 x 40 x 15 cm   23.5" x 15.5" x 6" | <b>21106</b>                       |
| <b>textile</b>                       | 100% polypropylene, quick-dry foam |

## Nomad outdoor cushion

| length x width x height              | cumin                              | marsala      |
|--------------------------------------|------------------------------------|--------------|
| 50 x 50 x 15 cm   19.5" x 19.5" x 6" | <b>21153</b>                       | <b>21151</b> |
| 60 x 40 x 15 cm   23.5" x 15.5" x 6" | <b>21152</b>                       | <b>21150</b> |
| <b>textile</b>                       | 100% polypropylene, quick-dry foam |              |

white



oat



cumin



marsala





## Lines outdoor cushion

|                                      |                                    |
|--------------------------------------|------------------------------------|
| <b>length x width x height</b>       | white                              |
| 50 x 50 x 15 cm   19.5" x 19.5" x 6" | <b>21100</b>                       |
| <b>textile</b>                       | 100% polypropylene, quick-dry foam |

white



## Dots outdoor cushion

|                                    |                                    |
|------------------------------------|------------------------------------|
| <b>length x width x height</b>     | white                              |
| 55 x 35 x 15 cm   21.5" x 14" x 6" | <b>21101</b>                       |
| <b>textile</b>                     | 100% polypropylene, quick-dry foam |

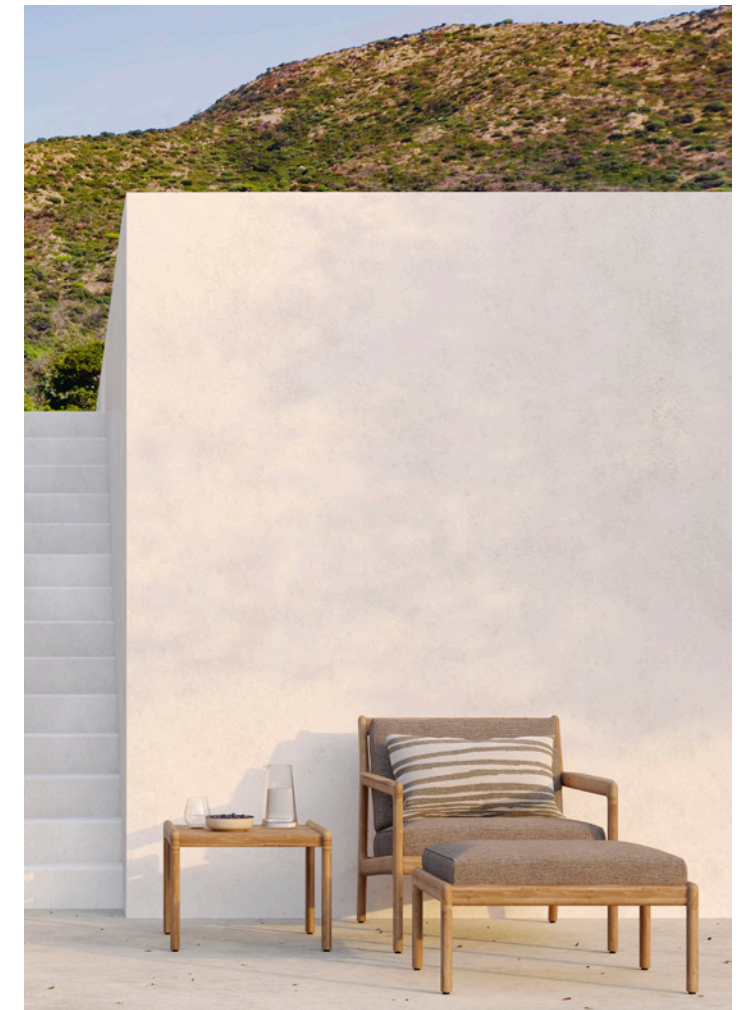
white



## Stripes outdoor cushion

|                                      |                                    |
|--------------------------------------|------------------------------------|
| <b>length x width x height</b>       | white                              |
| 60 x 40 x 15 cm   23.5" x 15.5" x 6" | <b>21102</b>                       |
| <b>textile</b>                       | 100% polypropylene, quick-dry foam |

white



# Raincovers outdoor furniture

| RECTANGULAR DINING SET  |  | raincover |
|-------------------------|--|-----------|
| length x width x height |  |           |
| 6 chairs                | 216 × 135 × 76 cm   85" × 53" × 30"                                  | 19975     |
| 8 chairs                | 254 × 155 × 76 cm   100" × 61" × 30"                                 | 19976     |
| 10 chairs               | 304 × 155 × 76 cm   119.5" × 61" × 30"                               | 19977     |
| 12 chairs               | 354 × 165 × 76 cm   139.5" × 65" × 30"                               | 19978     |
| ROUND DINING SET        |  |           |
| length x width x height |  |           |
| 7 chairs                | 207 × 207 × 82 cm _ 81.5" × 81.5" × 32.5"                            | 19979     |
| JACK SOFA               |  |           |
| length x width x height |  |           |
| lounge chair            | 76 × 90 × 77 cm   30" × 35.5" × 30.5"                                | 19970     |
| 2+ seater               | 180 × 90 × 77 cm   71" × 35.5" × 30.5"                               | 19971     |
| 3+ seater               | 265 × 90 × 77 cm   104.5" × 35.5" × 30.5"                            | 19972     |
| JACK FOOTSTOOL          |  |           |
| length x width x height |  |           |
|                         | 71 × 54 × 41 cm   28" × 21.5" × 16"                                  | 19973     |
| JACK ADJUSTABLE LOUNGER |  |           |
| length x width x height |  |           |
|                         | 216 × 84 × 34 cm   85" × 33" × 13.5"                                 | 19974     |
| upholstery              | water resistant, UV stabilised and frost-resistant PU-coated textile |           |

rectangular dining set



round dining set



jack sofa



jack footstool



jack adjustable lounger



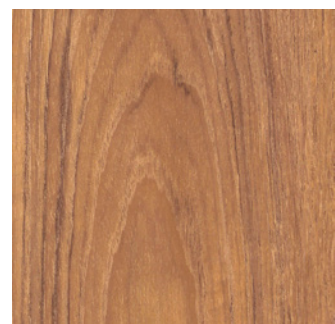




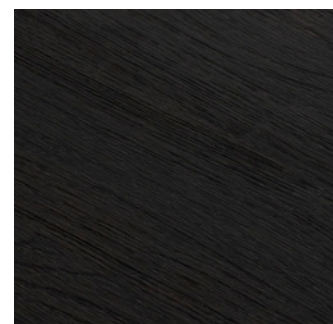
# Support

Additional information  
and resources

## Teak outdoor



natural



black



off white

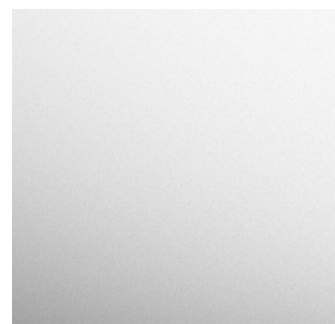


mocha



natural

## Aluminium



white

## Outdoor fabric Bok, Osso, Jack

## Outdoor fabric Donut

## Rugs indoor/outdoor



checked marsala



checked mocha



oat



checked natural



# Our sustainability commitment

We believe that durability and sustainability start with choosing the right quality material, and wooden products are particularly suited for refurbishment.

As a vertically integrated company, we know we are in a unique position to contribute to a sustainable shift in the industry. From design to the sourcing of raw materials, packaging and testing, we pay great attention to environmental protection and consumer safety throughout the product-development process. As a company, we work to minimise waste and close the loop toward circularity. Together with our Partners, we strive to do our humble share. Just as society and the industry evolve, so do we. We know there is no finish line in this journey and continue our efforts to constantly improve our products and operations.



## DURABILITY BY DESIGN

We pay particular attention to the quality of our products, not only during the development stage, but throughout the entire life cycle. We believe that durability and sustainability start with choosing the right quality material, and wooden products are particularly suited for refurbishment. Our team is always available to advise on how to care for products and thus extend their lifespan, as well as how to repair them. When developing new products, we consider reparability at the earliest design stage. Where possible, we provide spare parts to further extend the life of our products.

## THE ORIGIN OF OUR WOOD

The ultimate noble and renewable material, all our wood is sourced from responsibly and carefully managed forests compliant with the EU Timber Regulations and the Forest Law Enforcement, Governance and Trade (FLEGT) Action Plan. In addition, our wood sourced from Indonesia is verified under the Indonesian Timber Legality Assurance System (SVLK). Our teak collection includes products certified as FSC® which are clearly labelled in the catalogue. Finally, we carry the FSC® CoC (Chain of Custody) certification of our distribution centres.



## FOCUS ON QUALITY

Producing furniture and accessories at the highest quality, strength and safety is extremely important to us. Our internal protocols are based on the standards set by ANSI (American National Standards Institute) and BIFMA (North American Business and Institutional Furniture Manufacturers Association). Moreover, specific products within our collections are certified by independent external facilities in order to meet the European requirements for contract-grade use. Products also meet specific requirements based around ecological and health regulations such as toxic substance use and flammability.

## WASTE REDUCTION AND CIRCULARITY

We want to remain as environmentally friendly as possible, working to reduce waste from the earliest design stage. With this principle, we design to reduce or reuse as much scrap wood as possible. Production waste such as leftover logs, wood and sawdust are reused for other purposes. With full control over the (re)design, production, distribution, refurbishing and recycling processes, we are developing a vision for sustainability based on designing for circularity and lengthening product lifespans.

**READ MORE ABOUT OUR SUSTAINABILITY ACTIONS BY SCANNING THE QR CODE BELOW:**





# How to care for our products



## About natural materials

The beauty of natural materials lies in its peculiarities and imperfections. That is what separates true beauty from the artificial. Variations in wood grain and colour, knots, medullary rays and other natural characteristics are inherent in solid wood. These are far from flaws, but an intricate part of its character. Natural stone can also have minor pitting or surface fissures. We believe that these imperfections contribute to the charm of Ethnicraft products.

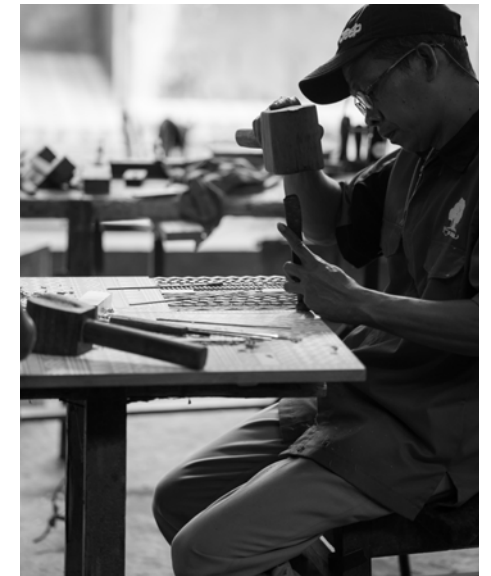
Wood, like any other natural and porous material, continues to absorb and release humidity throughout its life. Although Ethnicraft designs furniture that adapts well to the hydrometric conditions of its environment, some cracking or movement may occur. Please do not be alarmed, this is a normal response to the furniture's environment.

### TIMELESS DESIGN

All our designs are intentionally timeless. They withstand trends and associate well with different styles, and they can be moved from one space to the next, carrying over the stories of one lifetime into another. Our collections go back to the essence of what we believe is good design: pieces full of character, made from quality materials that age beautifully.

### CRAFTSMANSHIP

Outstanding craftsmanship is at the core of our brand, and behind the simplicity of our pieces lies a constant drive for innovation. Incorporating advanced techniques to our process of creation, each new design is revised and reworked to the last detail: every curve, texture and line reflect our design values.



## General care & maintenance tips

- 01** Recommended humidity in the room for interior products: between 40 and 60%.
- 02** Ideal room temperature: between 21°C/70°F and not below 14°C/57°F.
- 03** Do not drag the furniture along the floor; always lift the furniture when moving.
- 04** Avoid exposure to extreme conditions: do not place furniture or accessories near heating sources or air-conditioned spaces.
- 05** To prevent staining, we recommend that any spills are removed immediately.

- 06** When cleaning the surface, always work in the direction of the wood grain.
- 07** Use placemats and/or coasters to prevent hot pots and pans, or cold glasses and bottles, from damaging items.
- 08** Always ensure water and solutions used to clean the floor do not come into contact with the furniture's base, as it might leave permanent marks. For items that feature rubber glides, avoid alcohol-based cleaners on floors they are in direct contact with.

- 09** Indoor products are not intended for outdoor use. An outdoor product will always indicate so in its name. Last but not least, we always recommend to carefully read the care instructions specific to your item.
- 10** To prevent colour differences, do not place furniture or accessories in direct sunlight, and move objects placed on the furniture from time to time. Open extendable tables on a regular basis.



## All woods, hard surfaces & materials

### REGULAR CARE

For dusting, use a dry cloth. For cleaning, or in case of a spill, use a damp cloth and natural soap. Wipe in the direction of the grain. Do not use soap containing detergent or other chemicals. Dry with a soft, clean cloth to prevent spotting.

It is always recommended to protect any surfaces with coasters, mousepads or placemats. Repetitive daily use or heat can damage the finish. Always move objects such as flowerpots, vases, etc., from time to time. Ensure any excess water or dampness is wiped dry immediately to prevent marking the surface.



## Outdoor

Ethnicraft's Outdoor collection is designed to adapt well to a range of environmental conditions. The high density of teak wood means it is an excellent choice for outdoor use.

Our natural teak range comes without any finish or protective treatment. Over time, untreated furniture will grey with prolonged sun and rain exposure. This colour change is completely natural and purely superficial; it does not impact the strength or quality of the timber.

Our black teak range is brushed and varnished with the colour taint applied. This finish has been specifically developed to withstand natural elements such as severe high and low temperatures and UV light, as well as moisture and humidity.

While no additional treatment is required on any Ethnicraft Outdoor teak product, you can choose to apply a specialised teak cleaning product such as Ethnicraft Outdoor Teak Cleaner to remove any dirt buildup from items. To protect against stains and green deposits, and to slow the grey patina process of natural teak, you can use a teak protector such as the Ethnicraft Outdoor Teak Protector.

Our aluminium furniture is lightweight and powder-coated specific for the high UV of outdoor environments. Aluminium is a great low-maintenance material. See the full Outdoor care instructions for detailed care tips.

**FOR FULL CARE AND MAINTENANCE INFORMATION RELATED TO ETHNICRAFT PRODUCTS AND MATERIALS, PLEASE LINK DIRECTLY THROUGH TO OUR WEBSITE:**



### OUTDOOR UPHOLSTERY & FABRICS

Ethnicraft Outdoor fabrics are water-repellent, UV resistant, hypoallergenic and maintenance-friendly.

Clean with clear water and a natural soap. Covers are machine washable up to 30°C/86°F.

All cushions are inserted with a long-lasting, all-weather quick-dry foam. To keep your Ethnicraft Outdoor furniture in optimal condition, we suggest fitting our custom-made raincovers during seasons when it is not in use, or during periods of bad weather.

For our Indoor/Outdoor rugs, the soft and sustainable PET yarn is also incredibly durable, suited for both indoor and outdoor use. It is lightweight, stain resistant and very easy to care for. While being produced to be UV resistant, prolonged exposure to sunlight should still be avoided.



# Ethnicraft care products





## Ethnicraft Indoor/Outdoor Textile Protector

500ml/bottle

19930

To help prevent fabric stains and repel liquids, use Ethnicraft Indoor/Outdoor Textile Protector. Spray directly on a clean and dry textile to restore the moisture and dirt resistance, as well as provide a UV-blocking treatment. Always follow the care instructions specific to the textile item alongside the user instructions on the bottle. Water-based and eco-safe.

## Ethnicraft Indoor/Outdoor Textile Cleaner

500ml/bottle

19929

To maintain all fabrics and textiles, use Ethnicraft Indoor/Outdoor Textile Cleaner. Specifically designed to safely remove dirt and stains, the formula restores the original look of both indoor and outdoor fabrics and upholsteries. Always follow the care instructions specific to the textile item alongside the user instructions on the bottle. Water-based and eco-safe.

## Ethnicraft Outdoor Teak Protector

500ml/bottle

19928

To prolong the original finish of your Ethnicraft teak outdoor item and prevent stains, use Outdoor Teak Protector regularly from the outset of use. If the grey patina look that comes with natural weathering is preferred, simply rinse down furniture and clean using Outdoor Teak Cleaner before use. Ethnicraft Outdoor Teak Protector can always be applied at any point to prolong the desired wood colour. Water-based and eco-safe.

## Ethnicraft Outdoor Teak Cleaner

500ml/bottle + green pad

19927

To maintain your Ethnicraft teak outdoor item, use Outdoor Teak Cleaner from the outset of use. Specifically designed to safely deep clean and restore the original colour of outdoor teak items, Ethnicraft Outdoor Teak Cleaner also works to brighten weathered teak. Use alongside Ethnicraft Outdoor Teak Protector to prolong the desired finish tone. Water-based and eco-safe.

